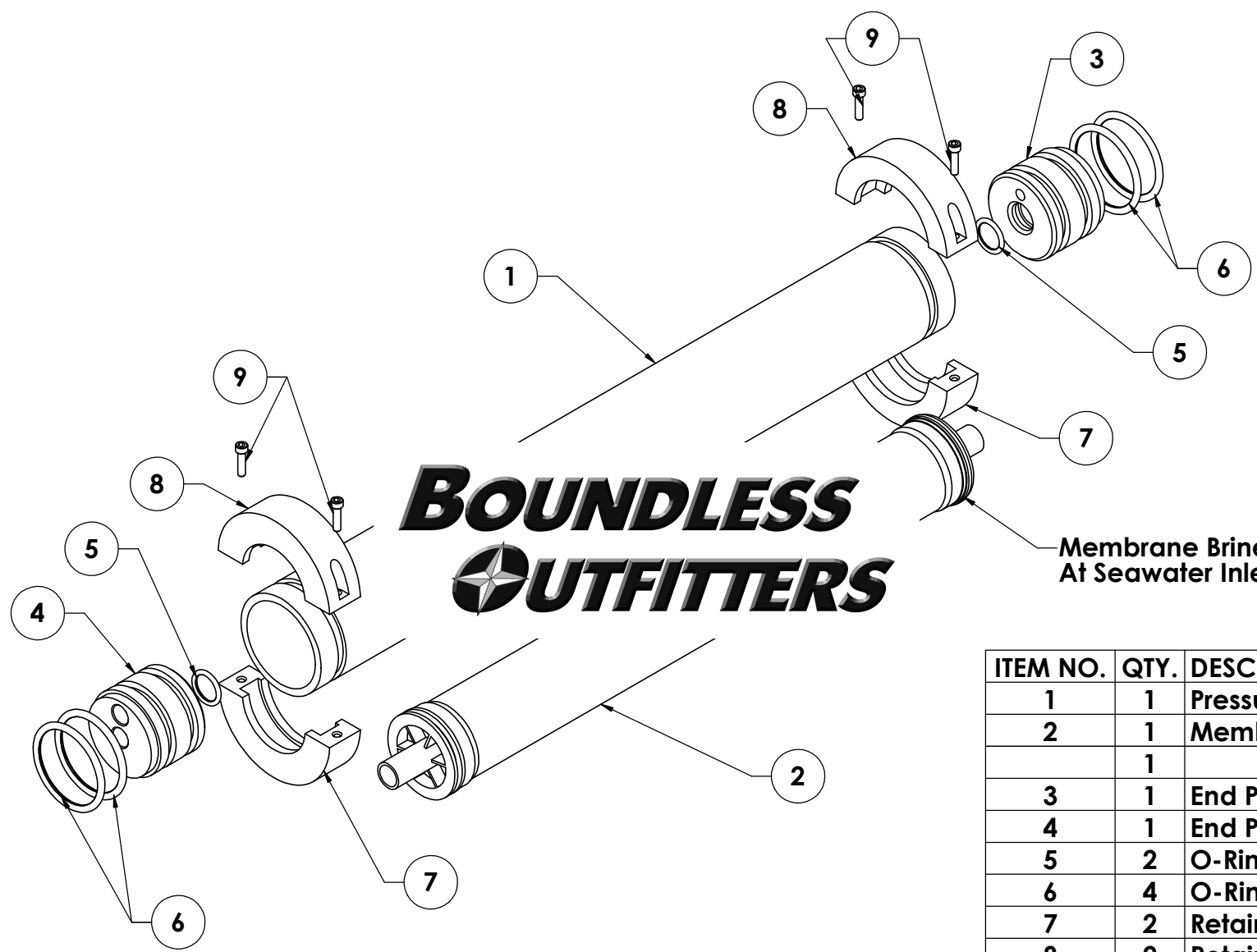


REV.		ZONE	DESCRIPTION	DATE	APPROVED
A			B8 Added Note (Sht 2)	06Dec10	TRA



Membrane Brine Seal  
At Seawater Inlet End

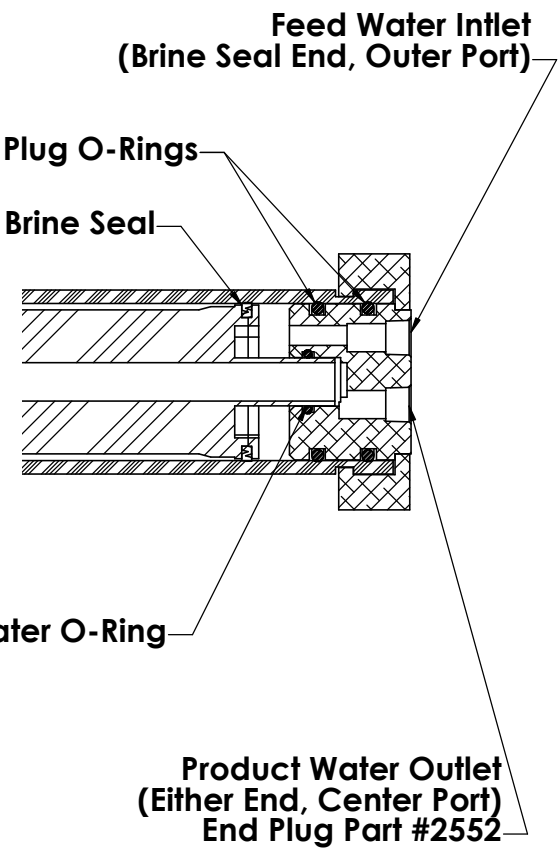
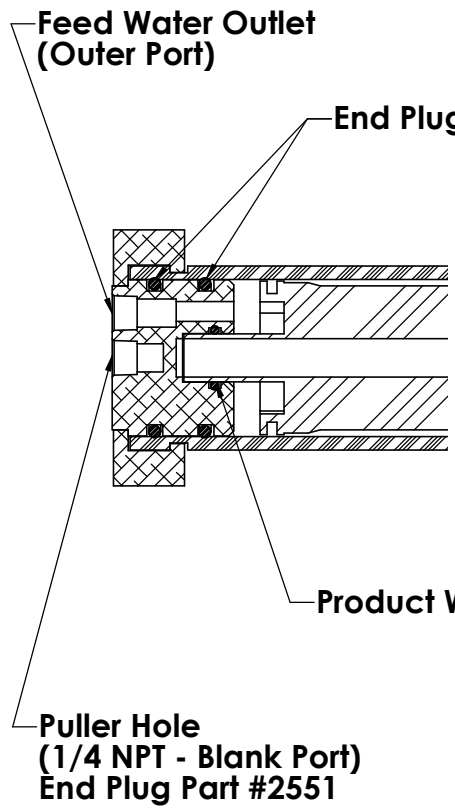
**BOUNDLESS  
OUTFITTERS**

ITEM NO.	QTY.	DESCRIPTION
1	1	Pressure Vessel Tube
2	1	Membrane
	1	
3	1	End Plug 2552
4	1	End Plug 2551
5	2	O-Ring, Product Water
6	4	O-Ring, End Plug
7	2	Retainer Clamp Half
8	2	Retainer Clamp Half
9	4	Retainer Clamp Screw

**PROPRIETARY AND CONFIDENTIAL**  
THE INFORMATION CONTAINED IN THIS DRAWING IS THE SOLE PROPERTY OF BOUNDLESS OUTFITTERS, INC. ANY REPRODUCTION IN PART OR AS A WHOLE WITHOUT THE WRITTEN PERMISSION OF BOUNDLESS OUTFITTERS, INC. IS PROHIBITED.

UNLESS OTHERWISE SPECIFIED:		DRAWN	DATE	NAME	Boundless Outfitters, Inc.
DIMENSIONS ARE IN INCHES		TRA	25-Oct-10		
TOLERANCES:		CHECKED			TITLE: <b>Pressure Vessel Assy</b>
FRACTIONAL: $\pm 1/64$		ENG APPR.			
ANGULAR: MACH: $\pm 0.5^\circ$ BEND $\pm 1.0^\circ$		MFG APPR.			SIZE DWG. NO. REV <b>C ROPV A</b>
TWO PLACE DECIMAL $\pm 0.10$		Q.A.			
THREE PLACE DECIMAL $\pm 0.005$		COMMENTS:			SCALE: 1:2 WEIGHT: SHEET 1 OF 2
INTERPRET GEOMETRIC TOLERANCING PER:					
MATERIAL: See BOM		FINISH			
APPLICATION	DO NOT SCALE DRAWING				

REV.		ZONE	DESCRIPTION	DATE	APPROVED
A			B8 Added Note (Sht 2)	06Dec10	TRA



**NOTES:**

The Membrane Brine Seal **MUST** be installed at the Feed Water **INLET** end.

**A** The Product Water Outlet (End Plug #2552) may be installed at either end of the pressure vessel.

You may need to "help" the Brine Seal into the tube. Use a spoon or other smooth object to tuck the seal into the tube.

For all seals and o-rings, use our O-Ring & Impeller Lubricant.

PROPRIETARY AND CONFIDENTIAL  
THE INFORMATION CONTAINED IN THIS DRAWING IS THE SOLE PROPERTY OF BOUNDLESS OUTFITTERS, INC. ANY REPRODUCTION IN PART OR AS A WHOLE WITHOUT THE WRITTEN PERMISSION OF BOUNDLESS OUTFITTERS, INC. IS PROHIBITED.

UNLESS OTHERWISE SPECIFIED:		DATE	NAME	Boundless Outfitters, Inc.
DIMENSIONS ARE IN INCHES		TRA	25-Oct-10	
TOLERANCES:		CHECKED		TITLE: <b>Pressure Vessel Assy</b>
FRACTIONAL ±1/64		ENG APPR.		
ANGULAR: ±1.0°		MFG APPR.		SIZE DWG. NO. REV <b>C ROPV A</b>
MACH: ±0.5° BEND ±1.0°		Q.A.		
TWO PLACE DECIMAL ±0.010		COMMENTS:		SCALE: 2:3 WEIGHT: SHEET 2 OF 2
THREE PLACE DECIMAL ±0.005				
INTERPRET GEOMETRIC TOLERANCING PER:				
MATERIAL				
See BOM				
FINISH				
-				
NEXT ASSY	USED ON	APPLICATION	DO NOT SCALE DRAWING	